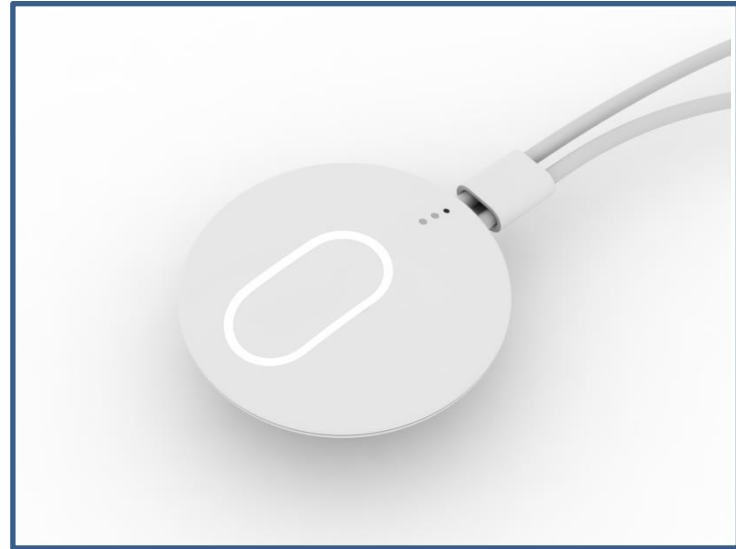




## Wireless Personal Care Phone





### ***High tech - Low complexity***

ECT's experience with wireless communication products – especially for the health care segment – traces many years back. We know that the users often are disabled to some degree, and that the disability can differ a lot. Also we know that a typical user of such equipment often has difficulties with operating high tech equipment.

The ECT CarePhone is state-of-the-art advanced technology but extremely basic and intuitive in its operation.





### ***One button ... one function***

The ECT CarePhone has only one single button for the purpose of raising an alarm-call. Not even an on/off button is on the unit!!

We know that additional buttons are source to mal-functions. If for example an elderly dement user by mistake push an on/off button, the alarm is not any longer functional. The user may not even know that he/she turned the unit off. This is why the OFF button is placed at the charger. You need actively to bring the unit to the charger to turn it off. Turning on – on the other hand – is very easy. If the ECT CarePhone is turned off, it will turn on almost whatever you do with the unit.... placing it in the charger, pushing the big button, etc.





### ***Clear warnings***

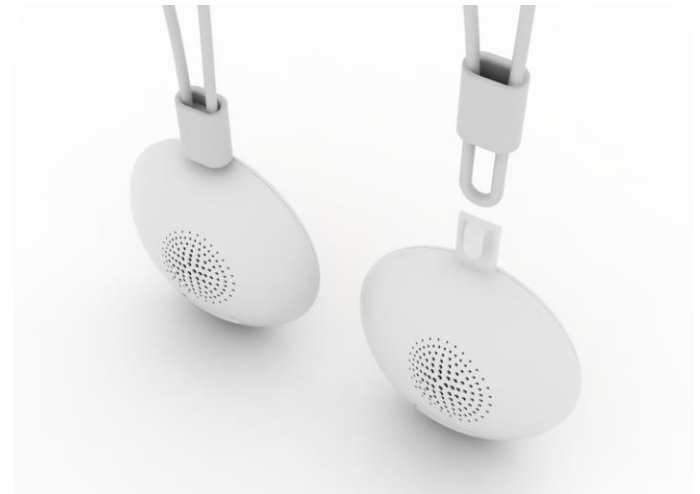
The unit is not operative if it is turned off, out of batteries or out of range. These 3 different situations are signaled through LED's and sound to the user in a very precise and intuitive way.





### ***Hygiene is important***

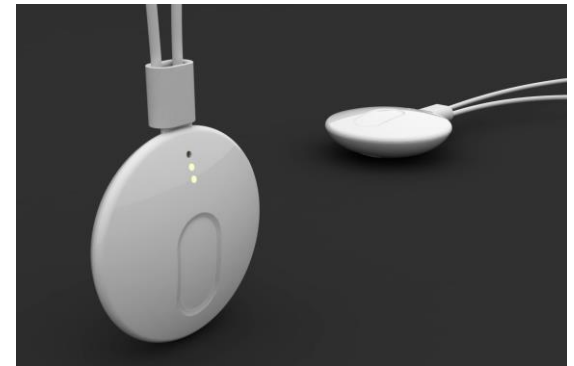
Products for the Health Care segment need to be easy to keep clean. The ECT CarePhone is designed to respond to this demand. The smooth surface and water resistant design is very easy to clean. The neck cord is removed without using tools and easy to clean with a brush and water.





### ***Ergonomic forms***

The shape of the ECT CarePhone is made for human beings. The round shape with no sharp edges makes the use comfortable, and the big button is designed to be easy to find. The button has the shape of a finger and is offset a bit on the front surface, to make it easy to identify in the dark or if the eyesight is not optimal.





### ***Wear it everywhere***

In daily use such personal device can be exposed to rough treatment. The ECT CarePhone is designed to be worn everywhere and resist drops, bumps and water splashing. No need for special concern or precautions in the bathroom or in the garden.





## ***Loud and crystal clear sound***

A very good part of the users of the ECT CarePhone are not exactly young people with fresh ears. As you get older the characteristics of the human ear normally changes. The ECT CarePhone has undergone computerized acoustic design to optimize the performance specifically with attention to the target group.

The acoustic performance is excellent regardless if the unit is worn in the neck cord or docked in the charger.







### ***Sensitive microphone***

The ECT CarePhone is designed to assist the user in critical situations where it is important also to hear a weak voice or sounds from a distance of several meters.





### ***A good and safe night's sleep***

The ECT CarePhone is designed to have an operation time of several days, but regardless of the operation time and battery size charging once in a while is extremely important. Many of the users of an ECT CarePhone wish to have structured daily routines, and therefore the unit is designed to go into the charging dock every night. The optimal place is on the bed side table.

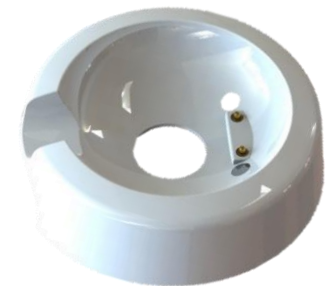
When placed in the charger the unit is in 'night mode'. In night mode the big push button is illuminated weakly. The illumination is strong enough to find the button in the dark, but weak enough not to disturb a good and safe night's sleep.





### ***Reliable charging***

When docking the ECT CarePhone in the charger the user expects an efficient and reliable charging. Strong magnets will assist pulling the unit towards the charging points. Even if the unit is not placed accurately in the charger the magnetic force will try to pull the unit into right place to secure stable charging.





### ***Safety first***

To avoid personal injury if the user stumbles or falls, the neck cord is designed automatically to release its lock at a small pulling force. At the same time this magnetic clasp is very handy to lock behind the neck – even if the user is disabled to some extent.





**ECT A/S, Sintrupvej 23, DK8220 Brabrand, DENMARK**

**Contact:**

**Knud Madsen**  
**Tel: +45 8744 1230**  
**Mob: +45 2465 6233**  
**mail: kma@ect.dk**

